

## Blowers Green Primary: School at Home **Year 4**

Tuesday 7<sup>th</sup> July 2020

**E-mail:** [yearfour@blowers.dudley.sch.uk](mailto:yearfour@blowers.dudley.sch.uk)

Hello again Class 4,

Don't forget if you would like to continue reading any of the books we have read on Purple Mash over the last couple of weeks feel free to!

Now, to get started with our home learning for today! As always, if you have any problems just email: [yearfour@blowers.dudley.sch.uk](mailto:yearfour@blowers.dudley.sch.uk) and I will be happy to help!

Mrs Ghent

P.S

Remember, to keep practising your times tables up to 12x AND you also have your challenges to work on too!

Subject	Task	Link/Resources
Literacy	Task 1: <b>SPAG Activity</b> - <b>See activity below</b>	<b><u>Check, edit and improve.</u></b> The E-mail below is full of spelling and punctuation mistakes!  Can you go through the email and correct all of their errors? Watch out for the tricky homophones.
Numeracy	Task 1: See below - <b><u>Maths Mat</u></b> Complete the questions below.  Can you complete all the questions?	<b><u>Maths Activity Mat</u></b> Complete the questions below.  Can you complete all the questions correctly?

### Geography

- See activity below

### Geography - Where is your fruit from?

Research where the following fruits are grown. Then find the countries on the map and match the fruits with where the fruits can be grown. Using a ruler, draw a line to connect the fruit to the country it is grown in.

### Numeracy Task 1:

## Maths Activity Mat

### Section 1

Find two consecutive numbers with a sum of:

11

27

### Section 2

Eight train tickets cost £112. What does one ticket cost?

### Section 3

What do you add to these numbers to make 100?

15

65

25

### Section 4

Use these three numbers to write three related facts.  $25 + 18 = 43$

### Section 5

Calculate:

$\div 10 = 5.9$

$\div 10 = 0.3$

$\div 100 = 9.4$

$\div 100 = 0.1$

### Section 6

A coach has travelled 376 miles. There are still 149 miles to travel. How far is the coach journey?

### Section 7

Round to the nearest pound.

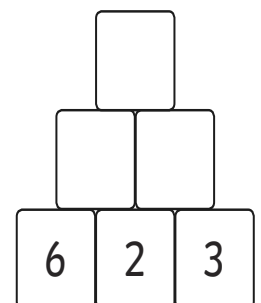
£6.50

£8.80

£5.10

### Section 8

Multiply to find the missing numbers.



### Foundation Subject Task 1:

## Geography

# Where Is Your Fruit From?

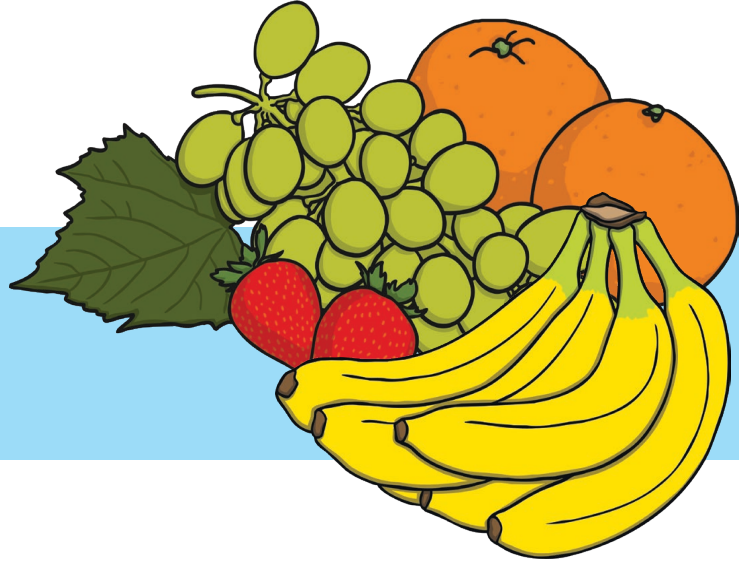
## Amazing Fact

The durian fruit from Southeast Asia, has such a potent smell that it is banned from hotels, airports and many other public places.

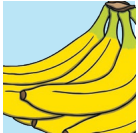
Research where the following fruits are grown. Then find the countries on the map and match the fruits with where the fruits can be grown. Using a ruler, draw a line to connect the fruit to the country it is grown in.

You could try to find out:

- if you can find durian for sale in this country;
- which other fruits are native to Southeast Asia;
- which other foods are banned and why.



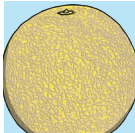
# Where Is Your Fruit From?



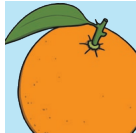
bananas



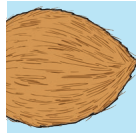
pineapples



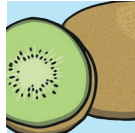
melons



oranges



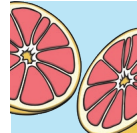
coconuts



kiwis



starfruits



grapefruits



grapes



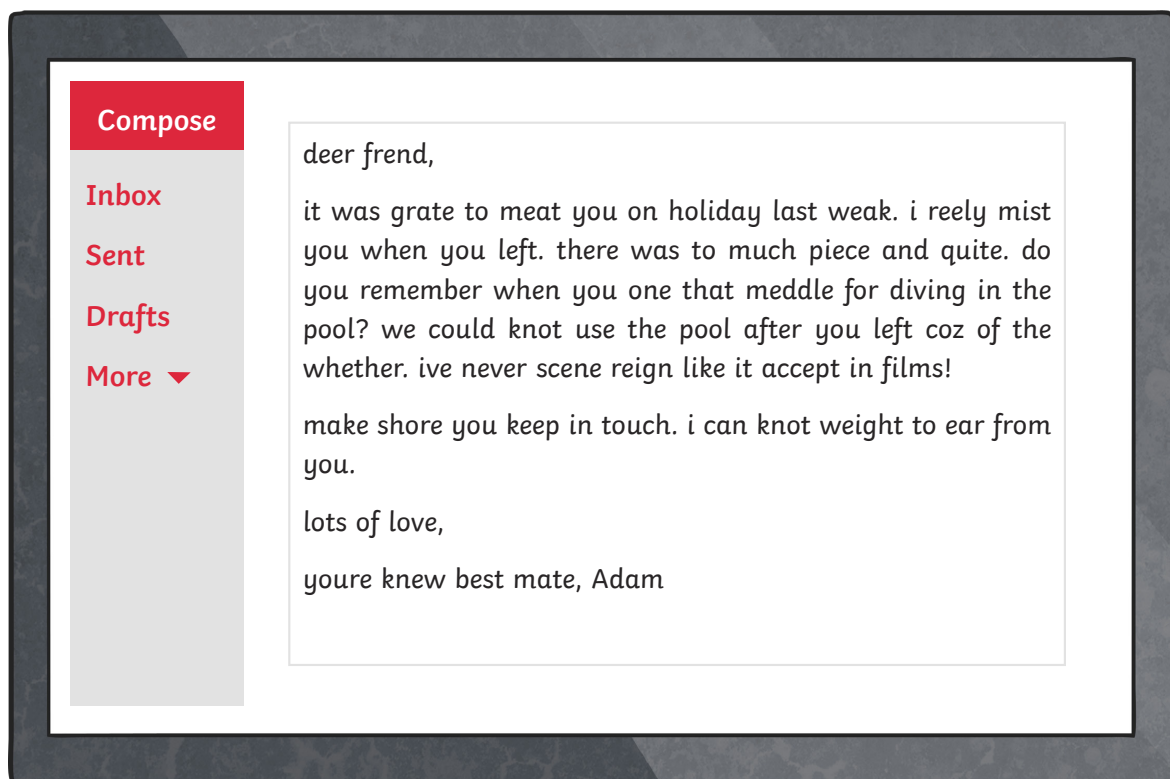
## Literacy Task:

### SPAG - Check, edit and improve.

See activity below on the next page...

## Knot Such a Grate E-Male

When you were on holiday, you met a new penpal but their email to you is full of spelling and punctuation mistakes! Can you go through the email and correct all of their errors? Watch out for the tricky homophones.



What three tips would you give your new penpal to improve their writing?

---

---

---

---

---

---

