



As it's Friday let's start the day with a dance. Find your favourite video on just dance to dance along to.

After that, we have **maths**.

Today we are going to be practising subtracting using decimals.

Once again, be sure that the place value is correct when you set out the digits in column subtraction.

Choose your chilli challenge below.

1.  $0.95 - 0.71 =$  \_\_\_\_\_ 2.  $0.77 - 0.58 =$  \_\_\_\_\_

3.  $8.5 - 2.1 =$  \_\_\_\_\_ 4.  $0.80 - 0.18 =$  \_\_\_\_\_

5.  $5.5 - 0.41 =$  \_\_\_\_\_ 6.  $9.2 - 4.2 =$  \_\_\_\_\_

7.  $0.93 - 0.69 =$  \_\_\_\_\_ 8.  $0.66 - 0.58 =$  \_\_\_\_\_

9.  $6.6 - 0.05 =$  \_\_\_\_\_ 10.  $4.7 - 0.8 =$  \_\_\_\_\_

11.  $3.8 - 0.20 =$  \_\_\_\_\_ 12.  $0.37 - 0.09 =$  \_\_\_\_\_

13.  $0.61 - 0.02 =$  \_\_\_\_\_ 14.  $6.7 - 3.7 =$  \_\_\_\_\_

15.  $2.1 - 1.0 =$  \_\_\_\_\_ 16.  $9.1 - 0.52 =$  \_\_\_\_\_

17.  $7.9 - 3.5 =$  \_\_\_\_\_ 18.  $8.1 - 2.7 =$  \_\_\_\_\_

1)  $7.1 + \underline{\quad} = 9.6$

2)  $8.0 + \underline{\quad} = 12.7$

3)  $7.9 + \underline{\quad} = 16.7$

4)  $\underline{\quad} + 6.3 = 14.7$

5)  $3.6 + \underline{\quad} = 13.4$

6)  $8.5 + \underline{\quad} = 15$

7)  $\underline{\quad} + 1.9 = 10.1$

8)  $4.8 + \underline{\quad} = 11.4$

9)  $\underline{\quad} + 8.2 = 13.7$

10)  $\underline{\quad} + 3.9 = 3.9$

11)  $\underline{\quad} + 4.9 = 7$

12)  $\underline{\quad} + 4.3 = 7.8$

13)  $4.0 + \underline{\quad} = 9.7$

14)  $\underline{\quad} + 3.1 = 11.9$

15)  $0.8 + \underline{\quad} = 1$

16)  $8.1 + \underline{\quad} = 15.5$

1)  $\underline{\quad} + 0.74 = 4.14$

2)  $\underline{\quad} + 1.2 = 4$

3)  $\underline{\quad} + 4.9 = 5.1$

4)  $2.5 + \underline{\quad} = 3.1$

5)  $\underline{\quad} + 0.8 = 2.8$

6)  $\underline{\quad} + 0.35 = 3.05$

7)  $\underline{\quad} + 5.7 = 6$

8)  $3.1 + \underline{\quad} = 3.5$

9)  $\underline{\quad} + 1.84 = 6.24$

10)  $\underline{\quad} + 3.4 = 4.77$

11)  $\underline{\quad} + 2.9 = 4.4$

12)  $\underline{\quad} + 3.9 = 8.9$

13)  $1.0 + \underline{\quad} = 6$

14)  $\underline{\quad} + 0.8 = 1.7$

15)  $2.5 + \underline{\quad} = 5.87$

16)  $\underline{\quad} + 0.5 = 3.7$

Our next lesson is English.

Read the poem and answer the questions below.

## A Trillion Tropical Leaves

The Amazon river's a mighty beast  
that meanders and powers and weaves;  
its fingers and veins flowing into the heart  
of a trillion tropical leaves.

It sits in the land of the samba and dance,  
South American countries count nine:  
There's Brazil and Peru, Colombia too,  
then Bolivia waits next in line.

The rainforest's huge; the biggest on Earth  
with millions of creatures and trees.  
Great Britain could fit in there 26 times,  
or 42 Englands with ease!

There're caimans and sloths, and ocelots too,  
piranhas and things that can bite;  
tarantulas, crocodiles, spiders and snakes,  
and jaguars spotted and bright.

And what do we do to this Eden on Earth?  
This land of such beauty and awe?  
We slash and we burn and we chop it all down,  
then we slash and we burn it some more.

The Amazon Rainforest's crying for help,  
ecosystems are naturally linked,  
it's dying, it's hurt; shall we chop down some more  
until all of Earth's life is extinct?

### Questions

1. Write down six animals that the poem mentions:

1. \_\_\_\_\_ 2. \_\_\_\_\_ 3. \_\_\_\_\_  
4. \_\_\_\_\_ 5. \_\_\_\_\_ 6. \_\_\_\_\_

2. What does it mean by  
'its fingers and veins flowing into the heart of a trillion tropical leaves'?

---

---

3. Look at the words at the end of the lines in the poem. Some of them rhyme.  
Find and write the word in the poem that rhymes with each of these:

- nine →  bite →   
extinct →  more →

4. Read the final verse. In your own words, summarise what's happening in the verse and what the poem is actually saying:

Our final lesson is art.

Tomorrow is Helen Keller day. Helen Keller is an inspirational lady who has achieved so much in her life despite being blind and deaf.

To learn more about Helen Keller please click on the link below.

[https://kids.kiddle.co/Helen\\_Keller](https://kids.kiddle.co/Helen_Keller)

This a photograph taken of Helen Keller in 1904. Despite this being a black and white photograph, you can see the light reflecting on Helen's face which creates lighter and darker areas in the photograph. Today I would like you to sketch the photograph below and focus on shading.

Watch the video below as a reminder on how to shade effectively with a pencil.

<https://safeYouTube.net/w/mg7K>



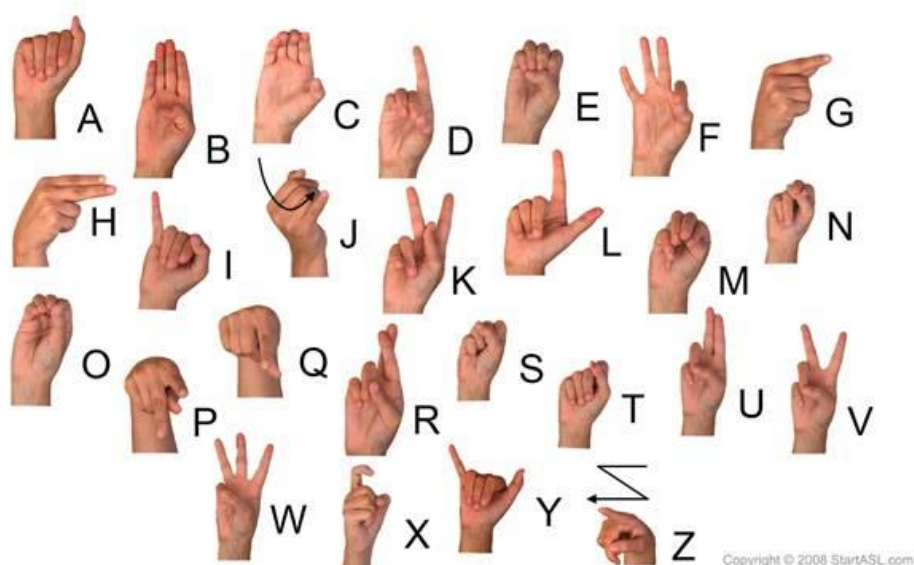
I can't wait to see your pictures!

Challenge – When people are unable to hear, they use a special way of communication called sign language. Can you learn some simple signs?

## BRITISH SIGN LANGUAGE - GREETINGS



Can you learn to spell your name using sign language?



I hope you all have a lovely weekend!

## Maths answers

1.  $0.95 - 0.71 = \underline{0.24}$       2.  $0.77 - 0.58 = \underline{0.19}$

3.  $8.5 - 2.1 = \underline{6.4}$       4.  $0.80 - 0.18 = \underline{0.62}$

5.  $5.5 - 0.41 = \underline{5.09}$       6.  $9.2 - 4.2 = \underline{5.0}$

7.  $0.93 - 0.69 = \underline{0.24}$       8.  $0.66 - 0.58 = \underline{0.08}$

9.  $6.6 - 0.05 = \underline{6.55}$       10.  $4.7 - 0.8 = \underline{3.9}$

11.  $3.8 - 0.20 = \underline{3.60}$       12.  $0.37 - 0.09 = \underline{0.28}$

13.  $0.61 - 0.02 = \underline{0.59}$       14.  $6.7 - 3.7 = \underline{3.0}$

15.  $2.1 - 1.0 = \underline{1.1}$       16.  $9.1 - 0.52 = \underline{8.58}$

17.  $7.9 - 3.5 = \underline{4.4}$       18.  $8.1 - 2.7 = \underline{5.4}$

1) 2.5

2) 4.7

3) 8.8

4) 8.4

5) 9.8

6) 6.5

7) 8.2

8) 6.6

9) 5.5

10) 0

11) 2.1

12) 3.5

13) 5.7

14) 8.8

15) 0.2

16) 7.4



1) 3.4

2) 2.8

3) 0.2

4) 0.6

5) 2

6) 2.7

7) 0.3

8) 0.4

9) 4.4

10) 1.37

11) 1.5

12) 5

13) 5

14) 0.9

15) 3.37

16) 3.2

---